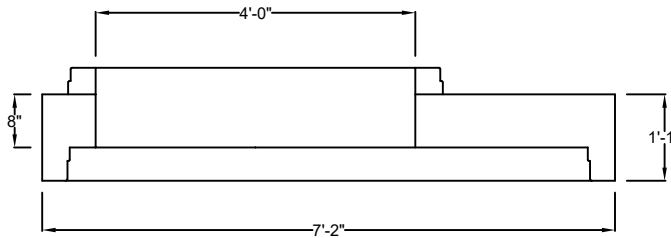
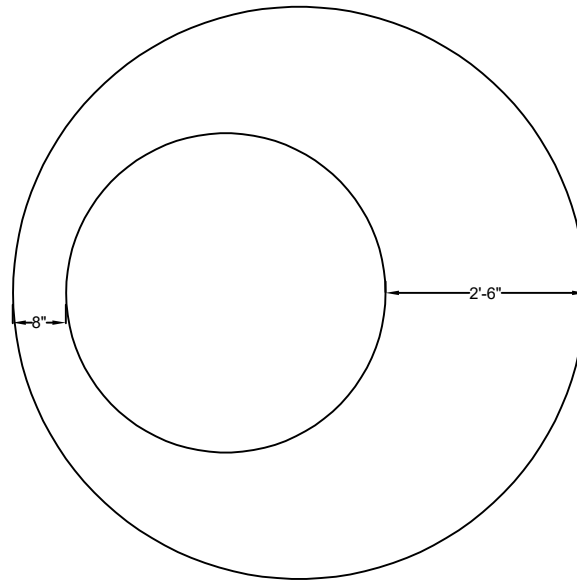
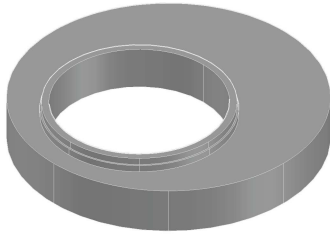




Precast Concrete 72" Dia. x 48" Dia. Reducer



Weight: 3,500 lbs

Standard Features

- 4500 PSI Concrete @ 28 Days
- Conforms to ASTM C-478
- Design for H2O Traffic Loading
- Manufactured in NPCA Certified Plant

Standard Options

- Gasket Joint



T: 269-342-0539
F: 269-344-4810
qualityprecastinc.com

7800 ADOBE RD.
KALAMAZOO, MI